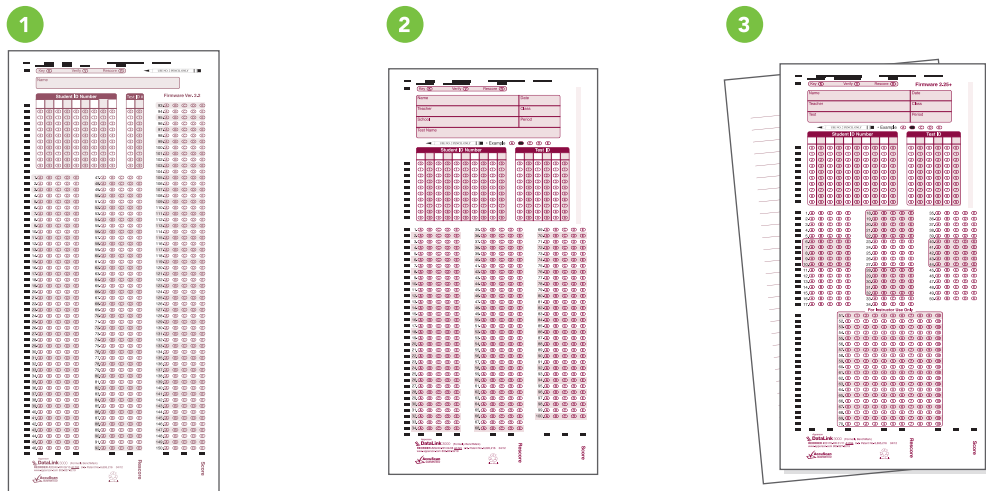


# Answer sheets, ballots, and item analysis!

We offer a large variety of answer sheets to suit nearly every testing need, and all at our renowned affordable prices.

Not much of a shopper or need a little assistance? Here's a listing of our top 4 most popular answer sheets:



1 150 question answer sheet  
Item # 20040

2 100 question answer sheet  
Item # 29240

3 50 question answer sheet  
Item # 20170



Browse our online catalog at [apperson.com/go/Sidekickcatalog](http://apperson.com/go/Sidekickcatalog)

Can't find what you need in our online catalog? Call us! We will find the answer sheet for you, and if we don't have it, we will custom design one for you.

**Apperson™**

Education Headquarters  
851 SW 34th Street, Bldg. B  
Renton, WA 98057  
P: 800.827.9219  
F: 800.321.8558  
[apperson.com](http://apperson.com)

Please recycle.  
©2012 Apperson. All rights reserved.  
Rev.6.12  
# SKITSK



# Welcome to the Apperson Family!

Congratulations on your new DataLink™ test-scoring solution!

DataLink is the most complete, affordable solution for digitally capturing and reporting data from paper assessments. Our DataLink test scanners, answer sheets and reporting software feature time-saving and reliable technology to deliver immediately useful, relevant information for instruction. DataLink easily connects paper to digital in every classroom.

Each Apperson scanner is carefully assembled at our education headquarters located near Seattle, Washington. Our software development team also operates out of the same location where they interact daily with your personal account representative and customer support team to ensure they are meeting every customer's requests and needs. We truly are a family-oriented business and we hope you enjoy being a part of our family.

Sincerely,



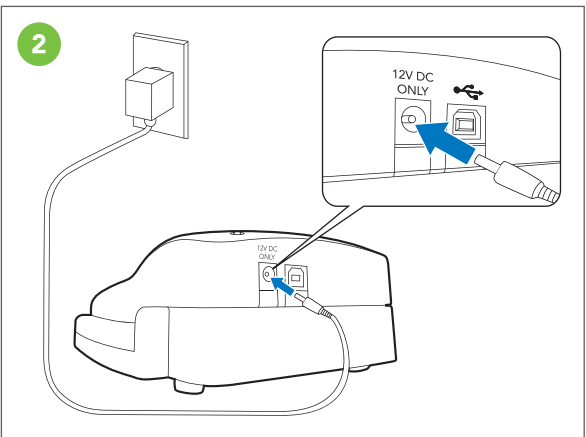
Bill Apperson  
Chairman of the Board

# Quick Start Guide

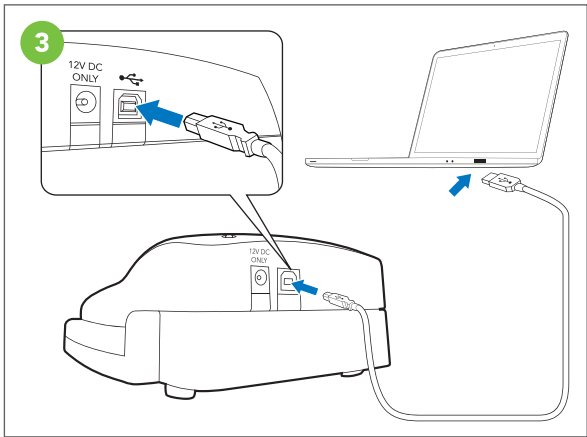
## Setting Up Your DataLink™ Sidekick Scanner



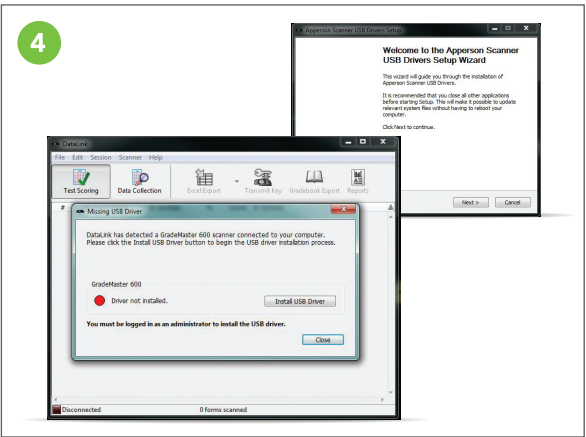
**Run DataLink™ Connect Software Installation**  
To begin the installation on your Windows or Mac computer, locate the DataLink Connect disk which can be found in the front of this kit. Insert the CD into the computer's CD-ROM drive and select "Install DataLink Connect." Complete the installation using the onscreen instructions.



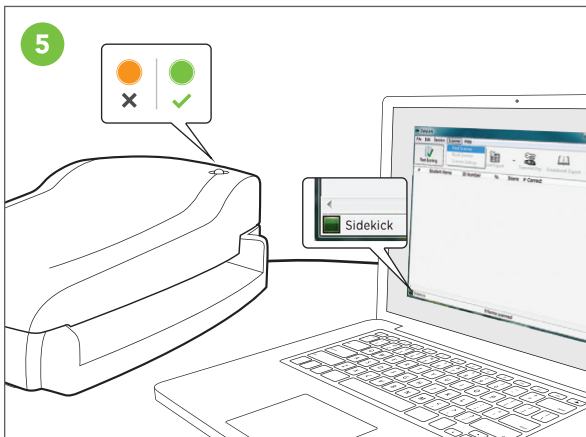
**Connect Power Cable**  
Plug the power supply into the back of the scanner and power source.



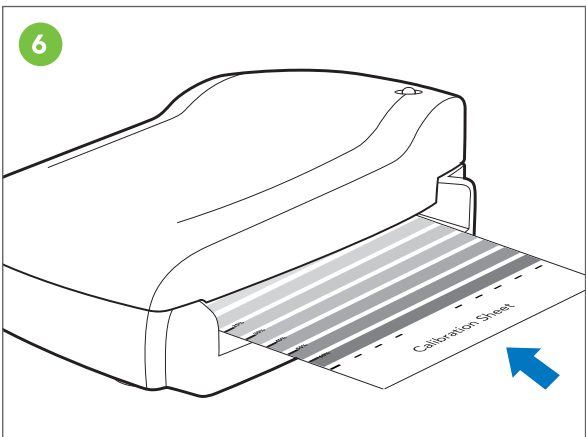
**Connect USB Cable**  
Connect the scanner to your computer using the USB cable.



**Install Scanner Drivers**  
Confirm you've logged in as an administrative user on your computer before you continue. Launch the DataLink Connect software program to automatically start the driver installation process. The installation process can also be started from within DataLink Connect by selecting "USB Drivers" from the "Help" menu. Please note that the program will close to complete the USB driver installation.



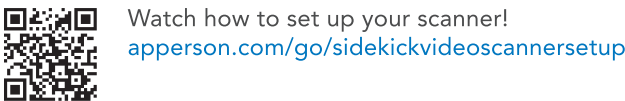
**Confirm Scanner is Ready**  
The indicator light on the scanner should now be green and "Sidekick" should be displayed in the lower left corner of the DataLink Connect software window. **If scanner indicator light is orange, the scanner is not ready.** To reestablish the connection between the DataLink Connect program and the scanner, select "Reset Scanner" from the "scanner" menu in DataLink Connect.



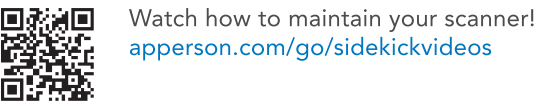
**Calibrate the Scanner**  
Feed the calibration sheet located in the back of this kit through the scanner. Your scanner is now ready to run your key and answer sheets to collect data into the DataLink Connect program.

You are now ready to start collecting and analyzing all your test data!

You are now ready to start scanning your tests!



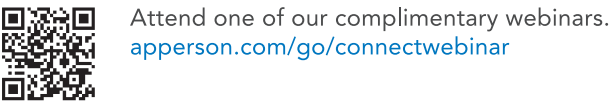
Watch how to set up your scanner!  
[apperson.com/go/sidekickvideoscannersetup](http://apperson.com/go/sidekickvideoscannersetup)



Watch how to maintain your scanner!  
[apperson.com/go/sidekickvideos](http://apperson.com/go/sidekickvideos)



Watch how to operate and use DataLink Connect!  
[apperson.com/go/installation](http://apperson.com/go/installation)



Attend one of our complimentary webinars.  
[apperson.com/go/connectwebinar](http://apperson.com/go/connectwebinar)

# Warranty Information

Apperson warrants that the scanner is free from defects in materials or workmanship under normal use during the 90-day warranty period. The warranty period commences on the first of the month following the shipping date. During the warranty period, Apperson will repair or replace defective parts with new parts, or with serviceable used parts that are equivalent or superior to new parts performance.

## What is covered:

- Parts and labor- any repair work must be approved by a technical support representative. Call 888.9.SideKick for repair approval.
- Shipment of scanner back to owner- owner of scanner is responsible for paying shipping the scanner to our Seattle location for repairs.
- As with all Apperson products, there is no charge for technical support via online chat or telephone for your SideKick scanner or DataLink Connect software.

## What is not covered:

- Routine cleaning or normal cosmetic and mechanical wear.
- Damage from acts of God.
- Damage from misuse, abuse or neglect.
- Damage from repair or replacement of warranted parts by non-Apperson personnel.
- Damage from modification or incorporation of other products.

## Extended Warranty Options

Should you wish to purchase an additional warranty, you may do so by calling our customer service center at 888.9.SideKick.

### Terms of the Warranty

The warranty is void on any product which the original identification marks or serial numbers have been altered. All exchanged parts replaced under this warranty will become the property of Apperson. If after repeated efforts, Apperson is unable to restore the scanner to good working order, you are entitled to a replacement scanner or a refund of the purchase price, at Apperson’s discretion.

EXCEPT AS EXPRESSLY SET FORTH IN THIS WARRANTY, APPERSON MAKES NO OTHER WARRANTIES, EXPRESSED OR IMPLIED, INCLUDING ANY IMPLIED WARRANTIES OF MERCHANTABILITY AND FITNESS FOR A PARTICULAR PURPOSE. APPERSON EXPRESSLY DISCLAIMS ALL WARRANTIES NOT STATED IN THIS LIMITED WARRANTY. ANY IMPLIED WARRANTIES THAT MAY BE IMPOSED BY LAW ARE LIMITED TO THE TERMS OF THIS EXPRESS LIMITED WARRANTY.

### Limitation of Remedy

Apperson is not liable for any damages caused by the scanner or the failure of the scanner to perform, including any lost profits, lost savings, incidental damages, or consequential damages. Apperson is not liable for any claim made by a third party or made for you by a third party.

This limitation applies whether damages are sought, or a claim made, under this warranty or as a tort claim (including negligence and strict product liability), a contract claim, or any other claim. This limitation cannot be waived or amended by any person. This limitation of liability will be effective even if Apperson or an authorized representative of Apperson has been advised by you of the possibility of such damages.

## This is Your Calibration Sheet!

Please do not lose this sheet as it is essential to making sure your scanner operates smoothly and accurately.

You will need to calibrate your scanner:

- When you first set up your scanner
- After 7,500 answer sheets have been scanned (and/or)
- Every six months